

# **W 75 – W 105 – W 125 – W 185**

## **INSTALLATION AND START-UP INSTRUCTIONS**

### **Contents**

Installation and maintenance cautions .....	1
Initial receipt of machines .....	2
Machine outline and dimensions .....	3
Preparing a foundation .....	4
Mechanical installation .....	5
Electrical installation .....	6
Water supply connection .....	7
Drain connection .....	8
Checklist prior to start-up .....	9
Safety rules .....	14
Safety and warning signs .....	15

The manufacturer reserves the right to make changes to design and material specifications without notification.





## **NOTICE TO: OWNERS, OPERATORS AND DEALERS OF WASCOMAT MACHINES**

IMPROPER INSTALLATION AND INADEQUATE MAINTENANCE, POOR HOUSEKEEPING AND WILLFUL NEGLECT OR BYPASSING OF SAFETY DEVICES MAY RESULT IN SERIOUS ACCIDENTS OR INJURY. TO ASSURE THE SAFETY OF CUSTOMERS AND/OR OPERATORS OF YOUR MACHINE, THE FOLLOWING MAINTENANCE CHECKS MUST BE PERFORMED ON A DAILY BASIS.

1. Prior to operation of the machine, check to make certain that all operating instructions and warning signs are affixed to the machine and legible. (See the back page of this manual for description and location of the signs.) Missing or illegible signs must be replaced immediately. Be sure you have spare signs and labels available at all times. These can be obtained from your dealer or Wascomat.
2. Check the door safety interlock, as follows:

- (a) OPEN THE DOOR of the machine and attempt to start in the normal manner:

For coin-operated models, insert the proper coins to start the machine.

For manually operated models, place the ON-OFF switch in the ON position and press the Start switch.

### **THE MACHINE(S) MUST NOT START WITH THE DOOR OPEN!**

- (b) CLOSE THE DOOR to start machine operation and, while it is operating, attempt to open the door without exerting extreme force on the door handle. **The door should remain locked!**

If the machine can start with the door open, or can continue to operate with the door unlocked, the door interlock is not operating properly. The machine must be placed out of order and the door interlock immediately replaced.

(See the door interlock section of the operating and maintenance manual).

3. DO NOT UNDER ANY CIRCUMSTANCES ATTEMPT TO BYPASS OR REWIRE ANY OF THE MACHINE SAFETY DEVICES AS THIS CAN RESULT IN SERIOUS ACCIDENTS.
4. **Be sure to keep the machine(s) in proper working order:** Follow **all** maintenance and safety procedures. Further information regarding machine safety, service and parts can be obtained from your dealer or from Wascomat through its Teletech Service Hotline - 516/371-0700.

All requests for service must include the model, serial number and electrical characteristics as they appear on the machine identification plate at the rear of the machine. Insert this information in the space provided on the previous page of this manual.

5. **WARNING:** DO NOT OPERATE MACHINE(S) WITH SAFETY DEVICES BYPASSED, REWIRED OR INOPERATIVE! DO NOT OPEN MACHINE DOOR UNTIL DRUM HAS STOPPED ROTATING!

## Initial receipt of machine

1. Upon receipt of machine(s), uncrate and check for possible damage incurred during shipment. Any damage claims against the carrier should be filed with the carrier immediately, since such damage is not the responsibility of Wascomat, nor is it covered under warranty.
2. Check to make certain you have received all of the following:
  - Wiring Diagram
  - Front Panel and screws - (if panel is not already mounted on machine)
  - Coin-Meter Kit (for coin operated machines)
  - Warranty Policy and Registration Card
  - Key(s) for top panel lock
  - Installation washers (4)

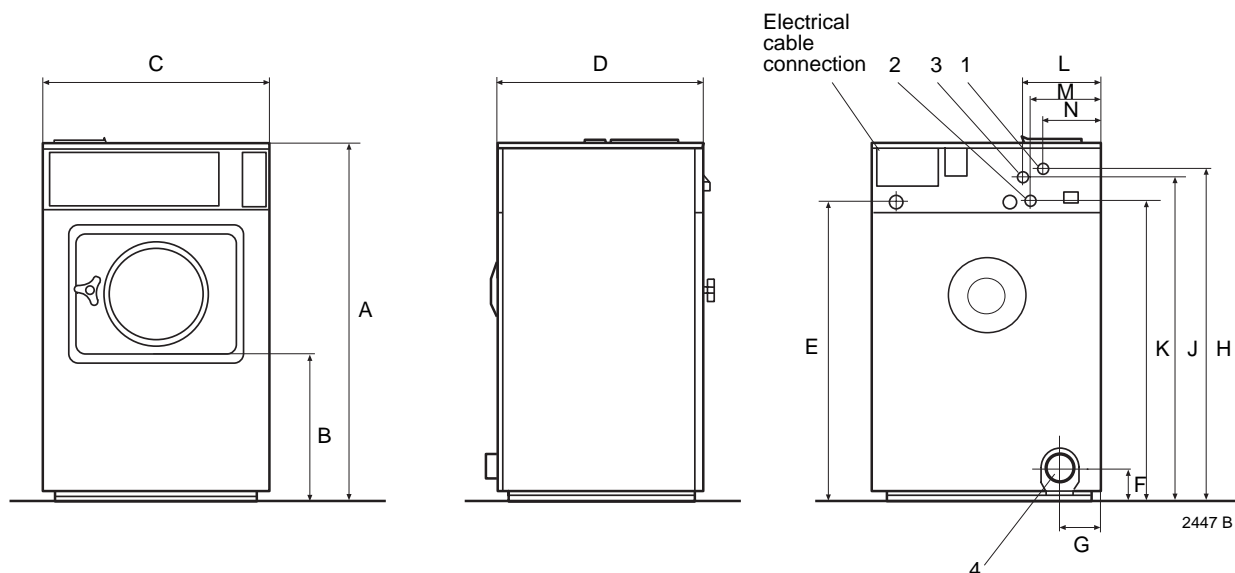
With the exception of the front panel and wiring diagram, these items will usually be found inside the wash cylinder. The wiring diagram is located beneath the top panel to the right of the component tray.

3. Complete and return the Warranty Registration Card. This will validate your warranty and enable you to receive the Operating and Maintenance Manual and Spare Parts List.
4. After receiving the Operating and Maintenance Manual, enter your machine serial number(s) on the first page of the manual. This number must be provided whenever you call Wascomat with questions regarding your machine(s).
5. Install the machine(s) according to the Installation Instructions provided in this manual. These are to be followed exactly.

### **CAUTION**

**Failure to follow Wascomat's installation instructions will automatically void machine warranty!**

## Outline and dimensions



### W75, 105, 125

- 1 Cold water
- 2 Hot water
- 4 Drain outlet

### W185

- 1 Cold water
- 2 Cold water (W185)
- 3 Hot water
- 4 Drain outlet

	W75		W105		W125		W185	
	mm	inches	mm	inches	mm	inches	mm	inches
A	1050	41 5/16	1135	44 11/16	1196	47 1/16	1315	51 3/4
B	437	17 3/16	522	20 9/16	465	18 5/16	540	21 1/4
C	660	26	660	26	745	29 5/16	827	32 9/16
D	593	23 3/8	710	27 5/16	915	36	960	37 13/16
E	895	35 1/4	980	38 9/16	1040	40 15/16	1160	45 11/16
F	100	3 15/16	185	7 5/16	100	3 15/16	100	3 15/16
G	125	4 15/16	125	4 15/16	270	10 5/8	260	10 1/4
H	980	38 1/2	1065	41 15/16	1130	44 11/16	1255	49 7/16
J	—	—	—	—	—	—	1215	47 13/16
K	890	35	975	38 3/8	1035	40 3/4	1155	45 1/2
L	—	—	—	—	—	—	295	11 5/8
M	205	8 1/16	205	8 1/16	205	8 1/16	205	8 1/16
N	160	6 5/16	160	6 5/16	160	6 5/16	160	6 5/16

# Installation

## Machine foundation

These machines are designed to be bolted in position to a solid concrete floor or specially prepared concrete pad with a minimum concrete strength of 3000 PSI. A template showing the size of the pad and positioning of the foundation bolts can be provided by Wascomat.

For installation on an existing ground level concrete floor, the floor must be at least 8" thick and of good quality. If the floor does not meet these requirements, then a 6-8" high concrete pad should be made. A prefabricated steel base is available for mounting of machines above a concrete floor.

Follow the instructions below when making a concrete foundation:

Fig.

1

1. Decide where to place the machine and consider maintenance requirements. The distance from the rear of the foundation to the wall should be at least 16 inches. The distance from the foundation to the nearest side wall should be at least 12 inches.

Fig.

2

2. Break up the floor to a depth of 3 inches, making sure that the sides of the hole slope outwards – the bottom of the hole should be 5 inches longer than the top.
3. Wet the hole well. Brush the bottom and sides with cement grout.
4. Prepare a casing and fill with 3,000 PSI min. concrete. Make sure the pad is level.

Fig.

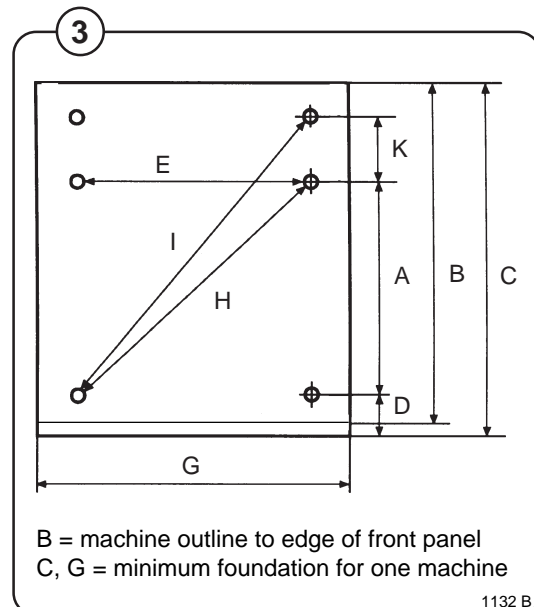
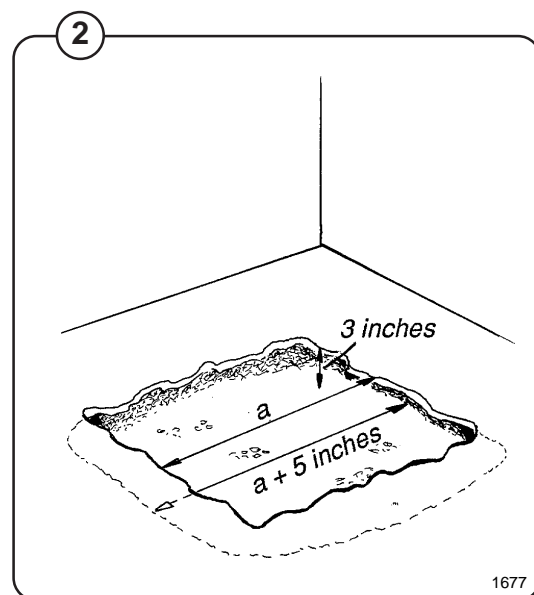
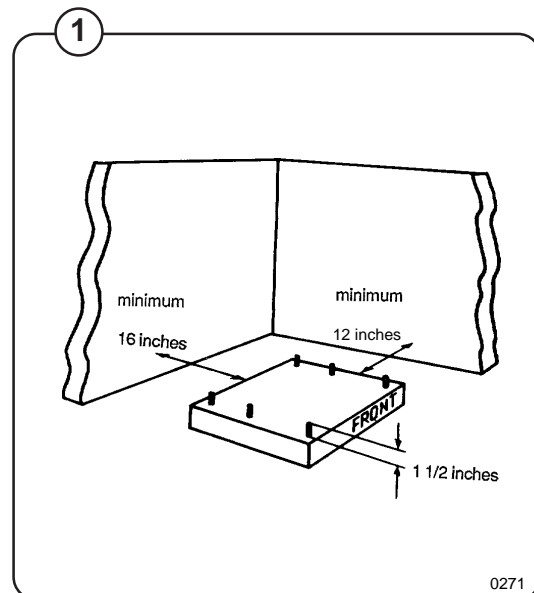
3

5. Use the template to position the foundation bolts correctly – bolts are to extend 1 1/2" above concrete.

5/8" diameter zinc-plated steel J-bolts are recommended. These are available from Wascomat or your dealer in heights of 6 inches for the W75 and W105 and 10 inches for the W125 and W185.

NOTE: A prefabricated steel frame, designed to be placed in the concrete instead of the individual mounting bolts, is also available.

	W75		W105		W125		W185	
	mm	inches	mm	inches	mm	inches	mm	inches
A	364	14 5/16	481	18 15/16	508	20	600	23 5/8
B	593	23 3/8	710	27 15/16	915	36	960	37 13/16
C	643	25 5/16	760	29 15/16	965	38	1010	39 3/4
D	100	4	100	4	115	4 1/2	115	4 1/2
E	530	20 7/8	530	20 7/8	600	23 5/8	700	27 9/16
G	700	27 9/16	700	27 9/16	815	32 1/16	900	35 7/16
H	643	25 5/16	715,6	28 3/16	786	30 15/16	922	36 1/8
I	-	-	-	-	991	39	1090	42 7/8
K	-	-	-	-	281	11	236	9 5/16



## Mechanical installation

### NOTE

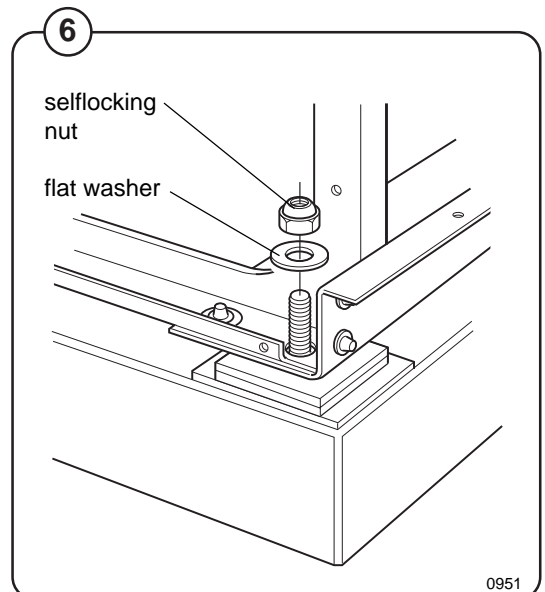
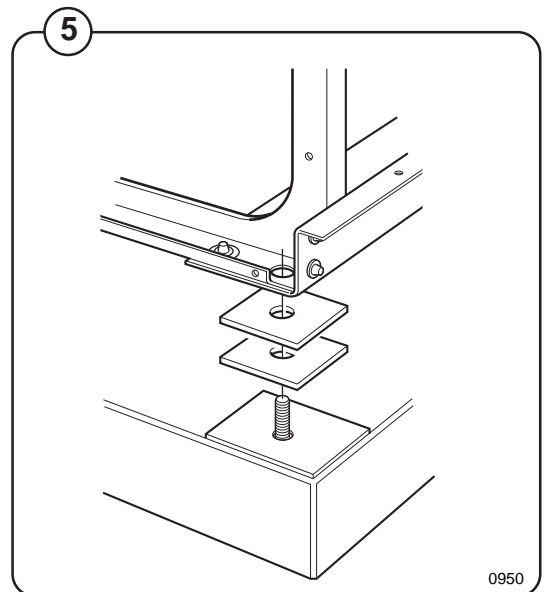
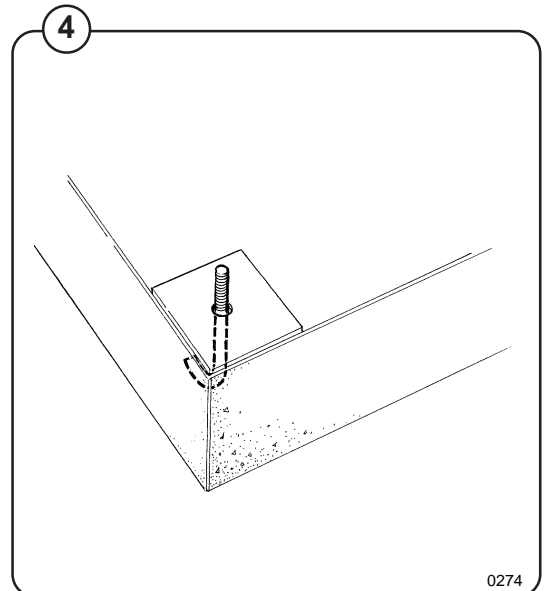
If you form a lip on top of the concrete pad in front of the washers, be sure you leave enough room to remove the bolts which secure the bottom of the front panel and enough room to swing out and remove the panel!

Before mounting the machine:

- Fig. 4
- Place wide steel shims or washers on the concrete foundation over the bolts.
- Fig. 5
- Lift the machine and lower it in position. Never use the door or the door handle to lift or lower the machine since this can damage the door and door interlock.
- Fig. 6
- Check that the machine is level front-to-rear and side-to-side and standing firmly on the four (W75, W105) or six (W125, W185) supporting points of the base. Spacing washers must be used to take up the space if one or more of these points is not resting against the floor/foundation.
  - Place the flat washers delivered with the machine over the foundation bolts. Secure the machine in position by tightening the self-locking nuts. See illustration.
  - Check and tighten the nuts every week for the first month to compensate for any settling of the foundation.

### IMPORTANT

The bases for the W75 and W105 machines have 6 bolt holes. For the W75 use the front and middle ones. For the W105 use the front and rear most ones. For the W125 and W185 make certain to use all 6 bolt holes.



## Electrical installation



**All electrical installations are to be carried out by licensed personnel.**

**Fig. 7** Although the machines are equipped with thermal overloads in the motor windings a separate three-phase common-trip circuit breaker must be installed for all three-phase machines.

For proper overcurrent protection, check the data plate at the rear of the machine. Also consult local electrical code for special requirements.

Use inverse-time circuit breaker only.

**Fig. 8** Connect L1, L2, L3 and ground wires according to the markings of the terminal block at the upper left rear corner of the machine. The cable is to hang in a large loose loop, supported by the clip of the terminal block.

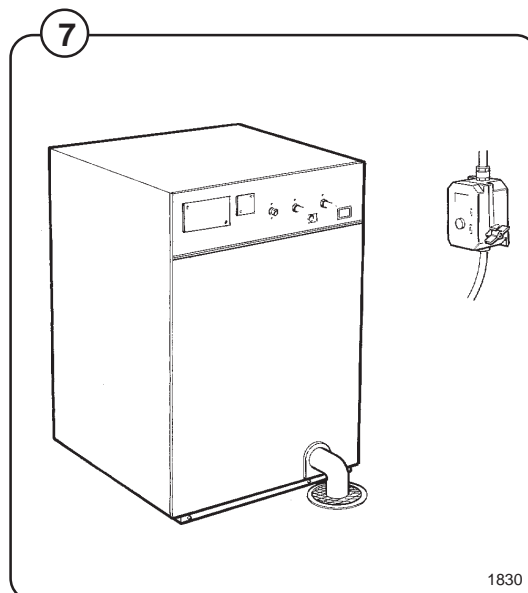
After installation, do the following for 3-phase machines:

Check the incoming power for a high voltage or "stinger" leg. This will usually measure higher than 150 Volts to ground. If present, connect that line to L2 on the terminal block.

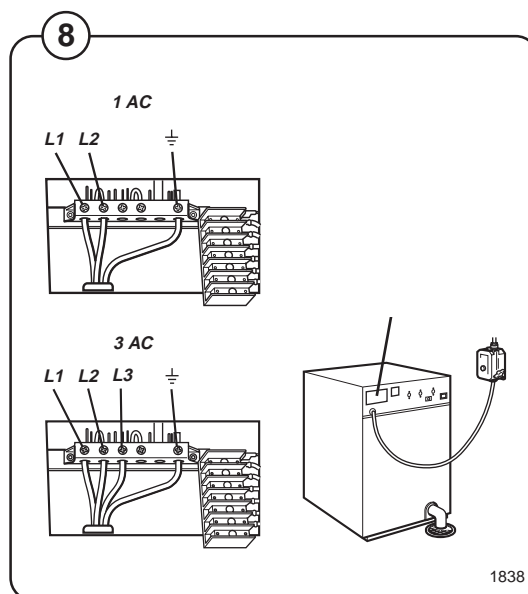
**Fig. 9** For 3-phase machines start the machine and check that the drum rotates in the ccw direction during extraction, when seen from the front. If the drum rotates in the wrong direction interchange lines L1 and L3 at the power connection terminals.

## Recommended overcurrent protection

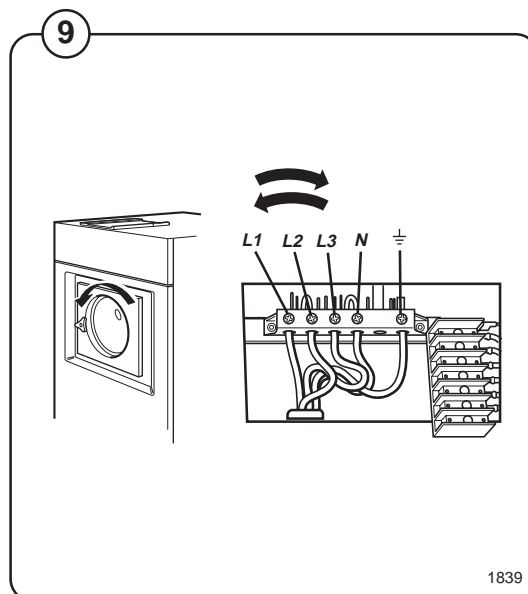
W 75	3-phase	– 15 A max
W 75	1-phase	– 20 A max
W 105	3-phase	– 15 A max
W 105	1-phase	– 20 A max
W 125	3-phase	– 15 A max
W 125	1-phase	– 20 A max
W 185	3-phase	– 15 A max
W 185	1-phase	– 20 A max



1830



1838



1839



## Water connections

### NOTE

**All plumbing must conform to national and local plumbing codes.**

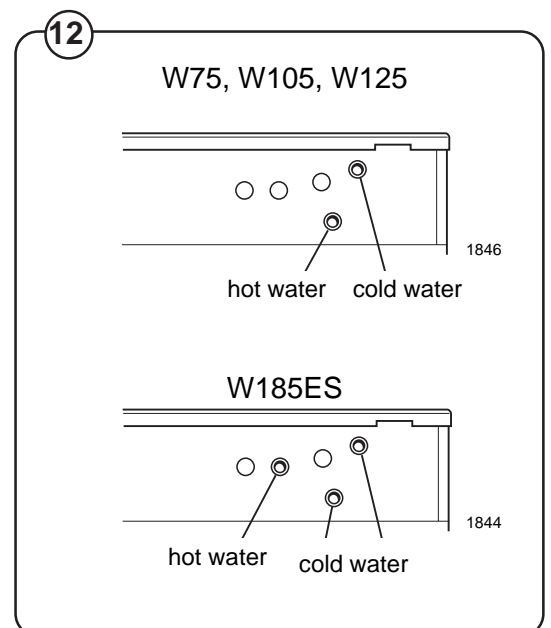
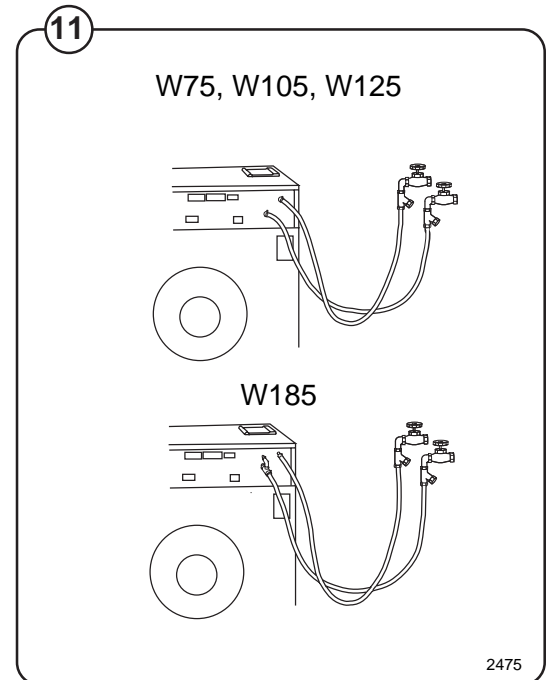
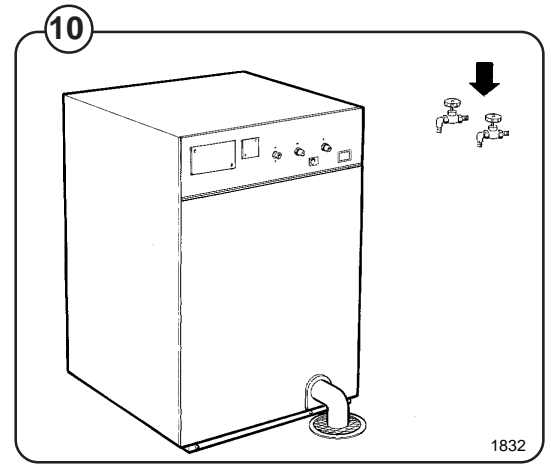
**Fig. 10** Incoming water lines should not require non-return or back-suction valves, as the machine is already equipped with backflow prevention. Shut-off valves must be provided on all incoming water lines.

**Fig. 11**

- Water inlets are labelled for hot and cold water connection.
- Before connecting the water hoses flush the water lines thoroughly and check that the filter at the machine inlet is fitted correctly. This is essential since dirt and grit in the water lines may clog the inlet valve filter screens and/or drain pilot valve, causing the machine to fill very slowly or the drain valve not to operate properly.

**Fig. 12**

- Connect the water supply to the machine with 3/4" reinforced rubber hosing not to exceed 6 ft in length. Hang the hosing in a large loop. Do not use rigid piping.
- Never force a hose onto the threads or you may cause cross-threading and leaks. If this occurs, place the threaded portion of the hose over the valve threads and push forward firmly, to catch the next thread. Then tighten.



## Drain connection

**Fig.** Connect a 3" (75 mm) flexible drain hose to the drain outlet of the machine.

13

The drain hose may be connected to a 2" to 3" T-connection coming out of your main drain line, which is typically four inches diameter, or the washer may dump into a trough which slopes to a drain, or directly into a floor drain as shown in the illustration. Check local codes for required installation procedure.

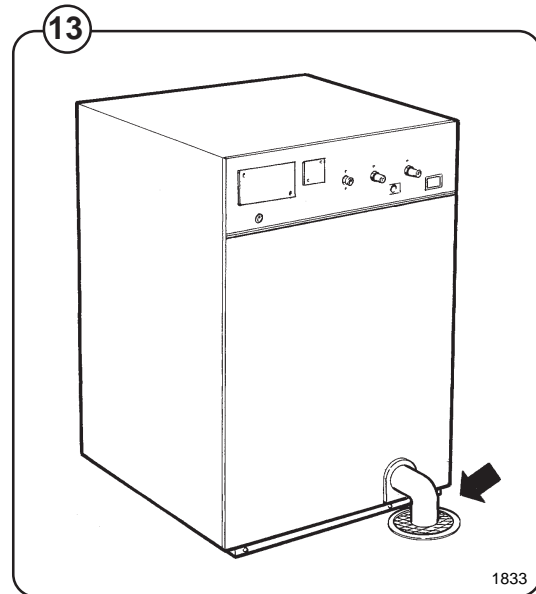
The drain hose must not have sharp bends and must slope from the machine to assure proper drainage. If the machine(s) drain into an open trough the trough should have a slope of 1/8"-1/4" per foot towards the main drain.

### NOTE

**To simplify installation, Wascomat has made available the following hose kits:**

For W75, W105 and W125    Partno. 002008  
For W185    Partno. 002009

These kits contain inlet hoses, drain hose, hose clamps and washers.



## Start-up and safety checklist

Before initial start-up of a Wascomat washer-extractor, the following safety checks must be performed:

Fig.

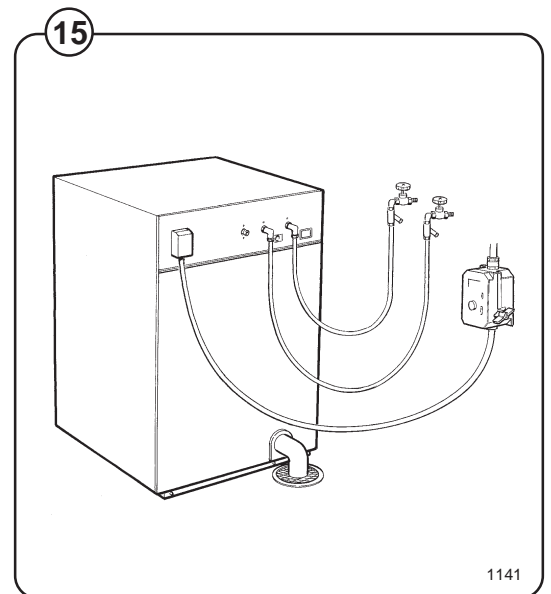
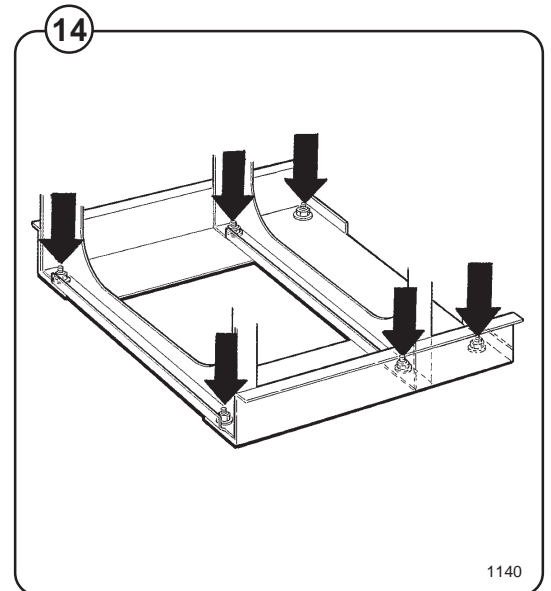
14

- Make sure the machine is properly bolted to the floor.

Fig.

15

- Make sure that all electrical and plumbing connections have been made in accordance with applicable local codes.
- Use only flexible water fill and drain hoses of the proper length to avoid sags and kinks.
- Make sure the machine is properly grounded electrically.



The machine should be cleaned when the installation is completed, and checked out as detailed below without loading the machine with fabrics:

1. Check the incoming power for proper voltage, phase and cycles.
2. Open manual shut-off valves to the machine.
3. Turn on electric power.
4. Check the function of the door safety interlock as shown below:

Fig.

16

- When washer loading door is open, the machine must not start. Verify this by attempting to start washer with door open.

Fig.

17

- When washer is in operation, the loading door must be locked and cannot be opened. Verify this by attempting to open the loading door when the machine is operating. If the machine can operate with the door open it must immediately be placed out of order until the problem is corrected.

For assistance call the Wascomat Tele-Tech Service at 516-371-0700.

## IMPORTANT

**Door safety interlock must be checked daily in accordance with above procedure.**

### WARNING:

**Before servicing Wascomat equipment, disconnect electrical power and shut off water supply vales.**

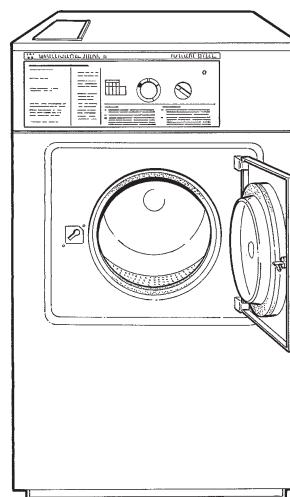
## IMPORTANT

**Le verrouillage de sûreté de la porte doit être vérifié tous les jours selon la procédure ci-dessus.**

### AVERTISSEMENT:

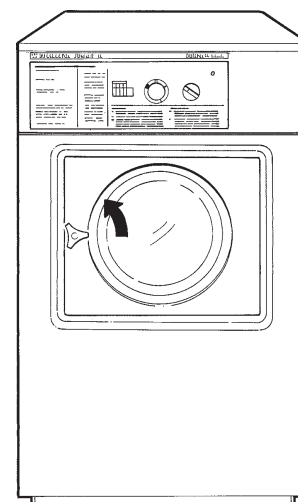
**Couper l'alimentation électrique avant tous travaux d'entretien sur un appareil Wascomat.**

16



1195

17



1196

## Start-up

Start coin-metered machines by inserting coins in the coin slide and pushing in, or for those equipped with a drop coin, inserting the proper number of coins.

Start manually-operated machines, by pressing the ON-OFF button and then depressing the START button and holding down until the cycle indicator dial shows that the cycle has started.

**Check the door interlock to make sure that the machine does not operate with the door open and that the door remains locked while the machine is operating. This must be checked daily! If the door interlock fails to operate correctly, the machine must be placed out-of-order until the problem is corrected.**

If the machine fails to start:

- A. Check power to the machine. Make sure it is present and correct.
- B. Check the control circuit fuses. Replace if absent or blown.
- C. Check the door lock. If the door can be opened, check power to the door lock solenoid coil. It should be either 120V or 220V AC, (depending upon the machine voltage).
- D. If proper voltage is present, check that the solenoid plunger can move freely.

If the correct voltage is not present, check the door switch. Make sure it is activated. If necessary, loosen the two screws holding the door lock at the right side and attempt to seat it more firmly. Retighten the screws afterwards.

- E. Check the quick-disconnect connectors. Make sure they are tight. If necessary, call Wascomat's Tele-Tech Service at 516-371-0700, or your local Dealer. Consult your manual for further assistance.

- Fig. 18** 5. Select the HOT program and start the machine.
6. Run through a complete cycle, checking for water temperature, drain operation and extract direction.
- Fig. 19** 7. When the program is in the Soak cycle, hot and cold water should be entering the machine. In the Wash cycle only hot water should enter.
- Fig. 20** 8. If cold water comes in, the hoses are improperly connected. Reverse hot and cold water hoses.
- Allow the machine to go through a complete cycle, checking that the sequence follows the proper cycle for fixed-cycle machines.
- Fig. 21** 9. To determine if the electrical connections are correct, check the direction of rotation during extraction. The cylinder must rotate in a counter-clockwise direction, as viewed from the front of the machine. To correct for clockwise rotation on 3-phase machines, reverse line connections L1 and either L2 or L3, whichever goes to the control circuit.

## NOTE

**If power is lost during the cycle and then regained, the machine will rapid-advance to the end of the cycle.**

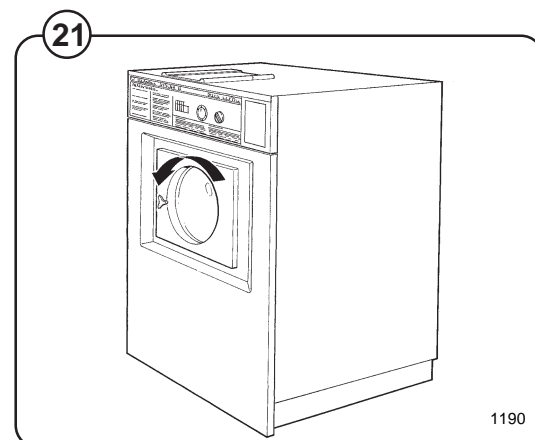
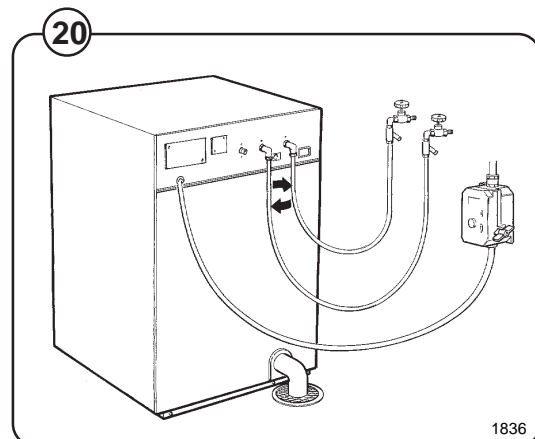
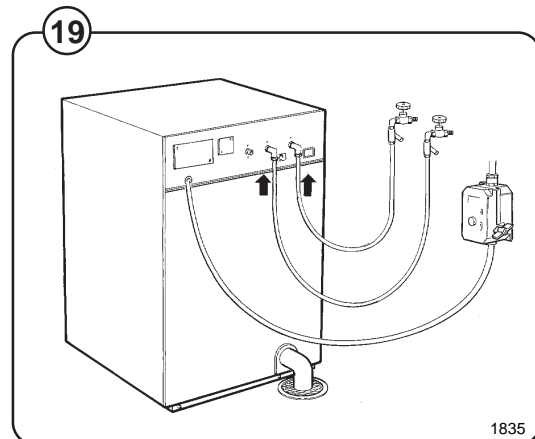
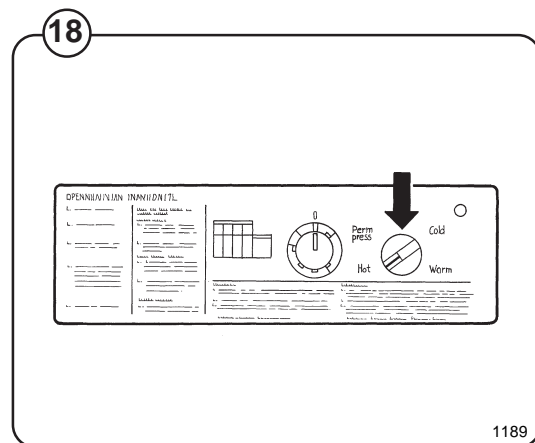
10. If the side panels of the washer move during extraction, remove the shipping security which connects the top rear of the cylinder to the upper section of the back panel. It is used to prevent shipping damage but has no function when the washer is installed in a laundry. In some rare installations this bracket may transmit vibrations to the side panels. If it does, remove the shipping security; otherwise, leave it in place.

If vibration continues during machine operation, check the following:

- The **Bolts** are not properly tightened. Check by wedging a screwdriver blade between the machine and base to see if it vibrates. All six bolts must be used on the W125 and W185.
- The **Bands** around the outer shell are not tight. Tighten the bolts attaching the bands together.
- The **Clamps** at the rear of the inner cylinder are not tight. Tighten them.

## NOTE

**Occasionally, some residual water can be found in the machine during installation. This is due to factory testing which all machines undergo and is normal.**



11. After initial start-up, place your Operating and Maintenance Manual, wiring diagram, and warranty policy in a safe, handy place for future reference.

If there are any further questions regarding machine installations or start-up, call Wascomat's Tele-Tech Service at 516-371-0700.

## **WARNING**

**DO NOT OPERATE MACHINE(S) WITH SAFETY DEVICES BYPASSED OR INOPERATIVE. DO NOT OPEN MACHINE DOOR UNTIL DRUM HAS STOPPED ROTATING AND DOOR LOCK HAS RELEASED.**

## Safety rules

- This machine is designed for water washing only.
- All installation operations are to be carried out by qualified personnel. Licensed personnel are necessary for connection of electric power to the machine.
- The door interlock must be checked daily for proper operation and must not be bypassed.
- Any leaking due faulty gaskets, hoses or hose connections etc., must be repaired immediately.
- All service personnel must be fully familiar with the operating manual before attempting any repair or maintenance of the machine.
- This machine must not be sprayed with water, otherwise short circuiting may occur.
- This machine must not be used by children.
- Fabric softeners with volatile or inflammable fluids are not to be used in the machine.

## Consignes de sécurité

- La machine est conçue pour le lavage à l'eau exclusivement.
- Tous les travaux d'installation doivent être effectués par une personne qualifiée. Tous les câblages électriques doivent être réalisés par un électricien diplômé.
- Le verrouillage du hublot doit être vérifié chaque jour et ne peut être neutralisé.
- Toute fuite du système, due à des joints défectueux etc., doit être réparée sans délai.
- Tous les membres du personnel d'entretien doivent être parfaitement familiarisés avec le manuel d'entretien avant d'entreprendre une réparation ou un entretien de la machine.
- Ne jamais asperger d'eau la machine sous peine de risquer un court-circuit.
- La machine ne peut être utilisée par des enfants.
- Ne pas utiliser dans la machine des adoucissants textiles contenant des liquides volatils ou inflammables.





## SAFETY AND WARNINGS SIGNS

Replace If Missing Or Illegible

One or more of these signs must be affixed on each machine as indicated, when not included as part of the front instruction panel.

### LOCATED ON THE OPERATING INSTRUCTION SIGN OF THE MACHINE:

#### CAUTION

1. Do not open washer door until cycle is completed, operating light is off, and wash cylinder has stopped rotating.
2. Do not tamper with the door safety switch or door lock.
3. Do not attempt to open door or place hands into washer to remove or add clothes during operation. This can cause serious injury.

**MACHINE SHOULD NOT BE USED BY CHILDREN**

#### PRECAUCION

1. No abra la puerta de la máquina lavadora sino hasta que la máquina haya terminado su ciclo, la luz operativa esté apagada y el cilindro de lavado haya completamente terminado de girar.
2. No interfiera o manipule el switch o la cerradura de la puerta.
3. No trate de abrir la puerta o meta las manos dentro de la máquina para meter o sacar ropa mientras la máquina está en operación, pues puede resultar seriamente herido.

**LAS MÁQUINAS NO DEBEN SER USADAS POR NIÑOS**

### LOCATED AT THE REAR OF THE MACHINE:

#### INSTALLATION & MAINTENANCE

##### WARNINGS – AVERTISSEMENT

1. This machine **MUST** be securely bolted according to the installation instructions, to reduce the risk of fire and to prevent serious injury, or damage to the machine.

*Pour réduire les risques d'incendie, fixer cet appareil sur un plancher beton sans revêtement.*

2. If installed on a floor of combustible material, the floor area below this machine must be covered by a metal sheet extending to the outer edges of the machine.

3. This machine **MUST** be connected to a dedicated electrical circuit to which no other lightning unit or general purpose receptacle is connected. Use copper conductor only.

*Utiliser seulement des conducteurs en cuivre.*

4. This machine **MUST** be serviced and operated in compliance with manufacturer's instructions. **CHECK DOOR LOCKS EVERY DAY FOR PROPER OPERATION TO PREVENT INJURY OR DAMAGE. IF THE DOOR LOCK FAILS TO OPERATE PROPERLY, PLACE THE MACHINE OUT OF ORDER UNTIL THE PROBLEM IS CORRECTED.**

5. Disconnect power prior to servicing of machine.

*Deconnecter cet appareil de l'alimentation avant de proceder a l'entretien.*

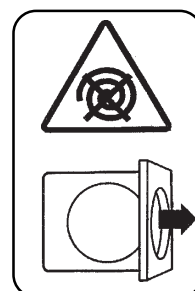
6. To remove top panel, first remove eventual screws at the rear. When remounting the top, reinstall them. To remove the top panel on models on which it is secured by one or two keylocks, use the keys originally shipped in the drum package. Be certain to relock after remounting the top panel.

MANUFACTURED BY WASCATOR  
DISTRIBUTED BY WASCOMAT INWOOD, NEW YORK, USA

471 76 62 02 04

### LOCATED ON THE DOOR:

If you need to order more safety or warning signs, call Wascomat's parts department at 516-371-2000, or call your local dealer.



471 46 71 48